

GO

[back]

NEWS

- Area New s
- Emerson
- Hillsdale
- Montvale
- Park Ridge
- River Vale
- Tw p of Washington
- Westw ood
- Woodcliff Lake
- Pascack Valley Hospital
- Pascack Valley Regional
- Arts & Leisure
- Feature Articles
- Schools

OPINION

- Editorials
- Brow n Aroun' Tow n
- Michael Dennehy
- Ed Flynn
- Garden Gal
- Lost in Suburbia
- Press Start
- Top Blonde

SPORTS

[Email-A-Friend](#) | [Printable Version](#) | [Comment on this Article](#)

\$46,300 donated for Whiteboards

(by Karen F. Mnrnarevic - January 27, 2009)

At its Jan. 26 meeting, the Montvale Board of Education accepted a donation in the amount of \$46,300, which will be used to purchase 17 Easiteach Interactive Whiteboards, from the Montvale Educational Foundation (MEF). The foundation conducts fundraising activities throughout the year, such as the annual MEF/BMW Challenge, a family fun day, Casino Night and "Bool-a-thon."

The MEF is a nonprofit organization established in 1994 as a joint effort of parents, community members, and local businesses. The MEF conducts fundraising to fulfill grants submitted by the district's elementary and middle schools for professional development tools, scholastic enrichment programs, and technology not funded by the district's regular budget.

According to acting Superintendent Lawrence Hughes, the Easiteach Interactive Whiteboards are already being used throughout the district and have become a valued tool in interactive learning. "What makes the interactive Whiteboard so exciting for students and teachers is the combination of real time application information," said Hughes.

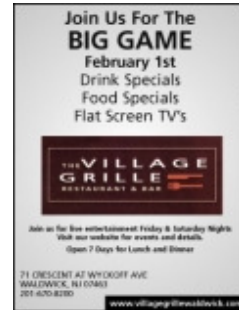
He explained that Brian Chinni, the district's director of curriculum and supervision for the past 12 years, is in charge of the school's Whiteboard program, and works with both the company that designs the software and the district's teachers to make sure that students and teachers experience the full benefits of the technology.

The Easiteach Whiteboards are fully Internet accessible and are linked to a service that provides a comprehensive database of maps, photos, literature, weather, mathematics and science materials that allow for quick referencing and interactive education. "It clearly is having a significant affect on the way teachers teach and

Local Ads



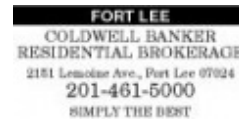
[John's Painting & Wallpapering](#)
TOWNSHIP OF WASHINGTON, NJ



[Village Grill](#)
WALDWICK, NJ



[Village School Of Children, The](#)
WALDWICK, NJ



[Coldwell Banker Corporate](#)
PARSIPPANY, NJ

powered by CoolerAds

1/31/2009

\$46,300 donated for Whiteboards - Pa...
learners learn, no question about it," said Hughes.

At present, Hughes said, the district is 10 or 11 classrooms away from having all classrooms outfitted with Whiteboards. "We are very fortunate here in Montvale to have such a supportive community, through our educational foundation, board of ed. and PTO."

Karen F. Mmarevic's e-mail address is
Mmarevic@northjersey.com

[Email-A-Friend](#)

[Printable Version](#)

[Comment on this Article](#)

[back]



1-800-366-2832

Heritage for the Blind

1-800-DONATE-CARS

- The donation is tax deductible.
- Pick-up is free.
- We take care of all the paperwork.

FREE
3 day vacation
to over 20
destinations

Pascack Valley Community Life
372 Kinderkamack Road
Westwood, NJ 07675
201-664-2501

Powered by **KAESU**

Copyright 2009

Powered By [Kaesu](#)